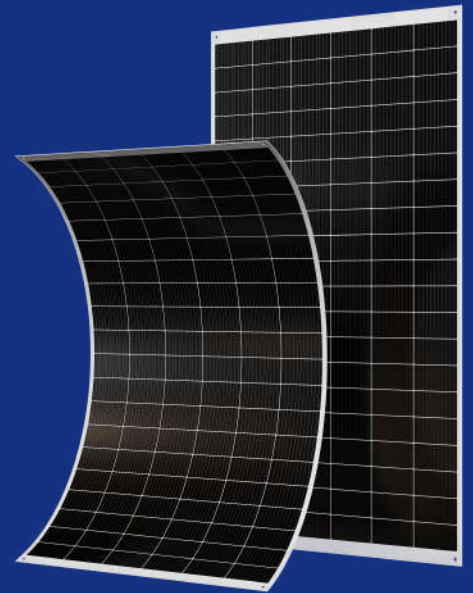


Lightweight flexible series

Greatly reduce the weight of the product and reduce installation costs

360-380W



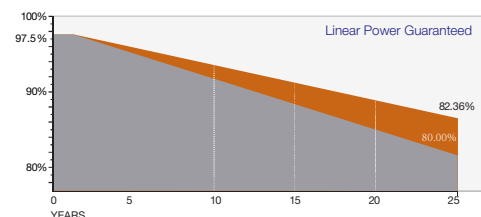
• Main Features

- Lightweight, ultra-high flexibility, easy installation
- Fitting loss reduction for higher power
- Competitive Low Light Performance
- Reduces power loss by minimizing the effects of shadow occlusion
- Through strict weather resistance test, it proves its superior and reliable performance:
 - Dust, acid and alkali resistance, salt spray resistance
 - Anti-PID
 - Anti-hail impact

• Quality System

ISO9001
ISO14001
ISO45001

• Product Guarantee



Product quality and process assurance



Linear Power Guaranteed

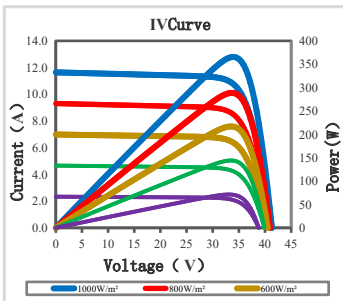
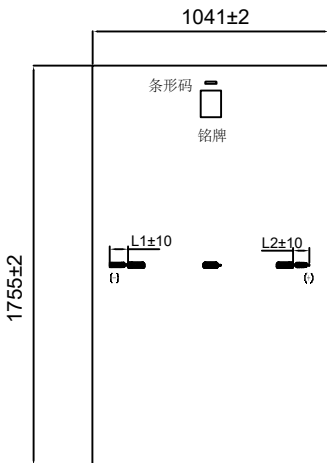
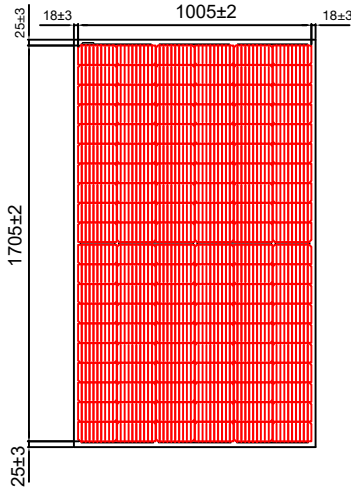


Tel / +86 131 3771 8313, +86 188 3741 8885
E-Mail / info@ericcity.com
Web / www.ericcity.com

©2023 Ericcity. All rights reserved. Specifications subject to technical changes. Version number.2023/7



ERICSCITY
Powered Green & Reliability



Electrical Performance Parameters

Specification	ER360FSP-1		ER365FSP-1		ER370FSP-1		ER375FSP-1		ER380FSP-1	
	STC	NMOT	STC	NMOT	STC	NMOT	STC	NMOT	STC	NMOT
Nominal Power (P_{mp})	360W	267W	365W	270W	370W	274W	375W	278W	380W	281W
Voc (V_{oc})	41.11V	39.37V	41.22V	39.57V	41.35V	39.79V	41.40V	39.88V	41.66V	39.97V
Isc (I_{sc})	11.18A	9.03A	11.28A	9.11A	11.37A	9.18A	11.49A	9.28A	11.62A	9.38A
Vmp (V_{mp})	34.72V	32.77V	34.94V	32.98V	34.12V	33.19V	35.21V	33.29V	35.65V	33.41V
Imp (I_{mp})	10.37A	8.15A	10.45A	8.19A	10.53A	8.25A	10.65A	8.35A	10.66A	8.41A
Efficiency (η_p)	21.0%		21.3%		21.6%		21.9%		22.2%	
Tolerance	0 ~ +5W									
Maximum system voltage	1500V DC									
Maximum rated fuse current	20A									

STC:AM=1.5, Irradiation:1000W/m², Temperature:25°C
 NMOT: Irradiation:800W/m², Temperature:20°C, Air Speed:1m/s

Structural Properties

Dimension	1755mm*1041mm
Thickness	2.2mm
Weight	5.0kg
Solar panel cell	Mono/120 (6*20) 166*83mm
Junction box	IP68 standard (3 bypass diodes), MC4 compatible connector
Waterproof	IP67
Output conductor	4.0mm ² (IEC) Length:(+)25cm,(-)35cm

Temperature Property

Maximum power temperature coefficient	-0.35 %/°C
Open circuit voltage temperature coefficient	-0.26 %/°C
Short circuit current temperature coefficient	+0.047 %/°C
Operating temperature	-40 ~ +85 °C
Module Nominal Operating Temperature (NMOT)	44 ± 2 °C

Packing

Container	Pcs/Box	No. of Box	Pcs of 40HQ Container
40HQ	45pcs	24	1080pcs

