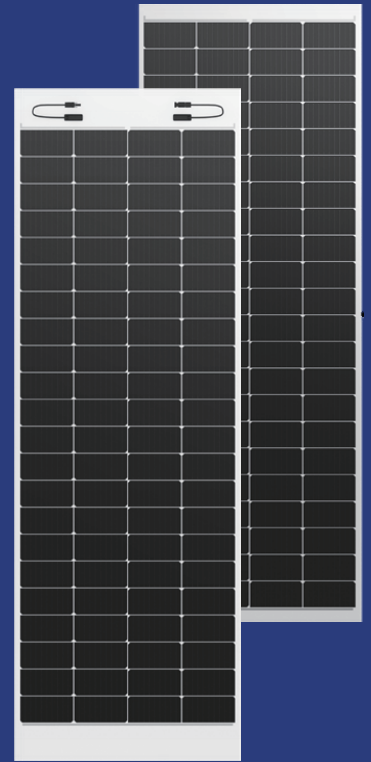


Lightweight solar panels

Galaxy photoelectric building materials through hot air welding and roof integration, no support, automatic and rapid installation, saving labor and materials; Ventilation structure design, effectively reduce the back temperature, prolong the roof life, but also ensure efficient power generation, reduce the total cost of the project.



315-335W

• Main Features

- Borderless technology
- Anti-dust accumulation structure on the surface
- High UV resistance technology
- Thin and light structure technology
- Mechanical fixation technology
- Ventilation and heat dissipation structure system
- Impact resistant structural system

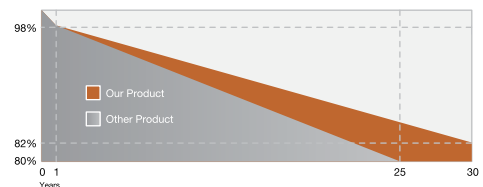
• Quality System

IEC 61215 IEC 61730
GB/T36584 GB 8624

• Product Certificate



• Product Guarantee

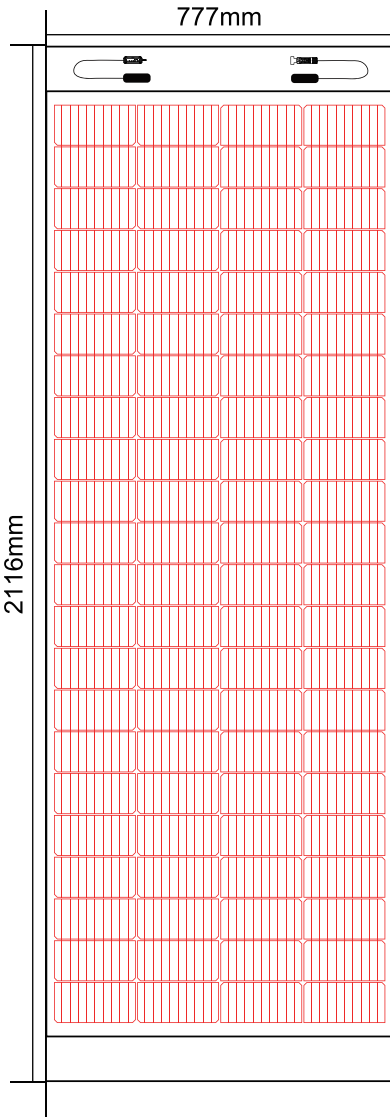


- ✓ 2.0% attenuation in the first year
- ✓ 0.55% attenuation per year thereafter
- ✓ 30 years linear power guaranteed
- ✓ 12 years product quality and process assurance



Tel / +86 131 3771 8313, +86 188 3741 8885
E-Mail / info@ericcity.com
Web / www.ericcity.com

©2024 Ericcity. All rights reserved. Specifications subject to technical changes. Version number. 2024/03



Structure Parameter

Specification	ERIC315LT	ERIC335LT
Dimension	2319×777×4mm	2116×777×4mm
Weight	11kg	9.3kg
kg/m ²	6kg	5.6kg
Reinforcement	1.6mm tempered glass	1.6mm tempered glass
Solar Cell	Mono PERC	Mono PERC

Electrical Property Parameter (STC)

STC:AM=1.5, Irradiance Carbon Emission Reduction 1000W/m², Tem 25°C

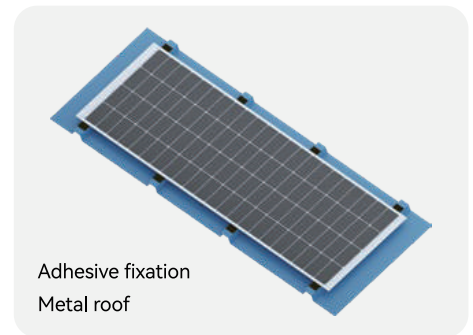
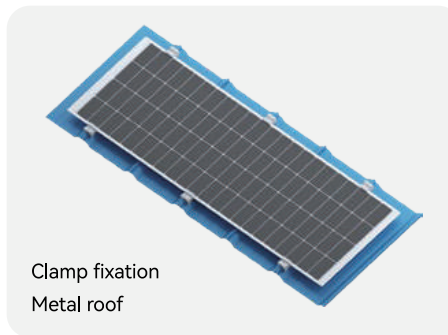
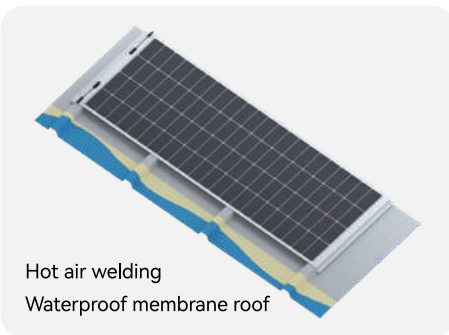
Max Power (Pmax)	315W	335W
Max Voltage (Vmpp)	25.65V	25.15V
Max Current (Impp)	12.30A	13.34A
Open Circuit Voltage (Voc)	30.53V	29.65V
Short Circuit Current (Isc)	12.90A	13.95A
Power /m ²	174W/m ²	204W/m ²

Work Condition

Max System Voltage	DC1500V	DC1500V
Maximum rated fuse current	25A	25A
Operation Temperature	-40°C ~ +85°C	-40°C ~ +85°C
Hail Impact Test	Pass the hail impact test with a diameter of 25mm (7-8g) and a speed of 23m/s	

Carbon Neutral Index

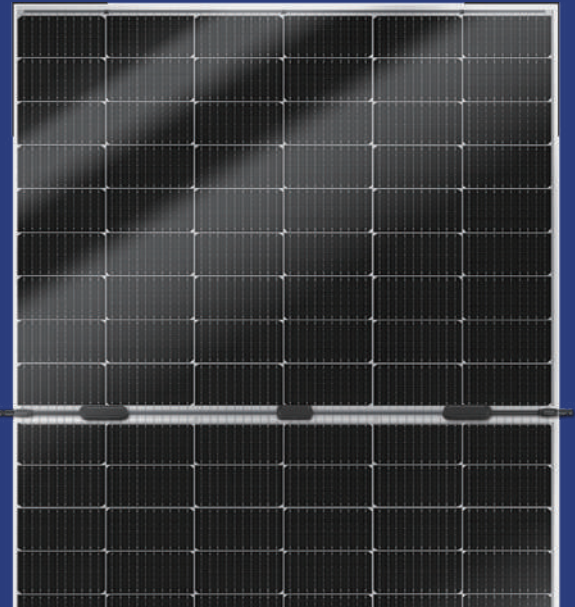
30year power generation	9352kWh	9944kWh
Carbon Emission Reduction	5434kg	5778kg







Lightweight solar panel

Lightweight and high-strength
High-efficiency PV modules

420W



• Main Features

- 
Light Weight
Weight 5.2 kg/m² for low load roof
- 
High Strength
The surface of ultra-thin tempered glass, resistant to hail impact and load
- 
High Efficiency
High light transmittance, more than 3% higher power than similar products, higher power generation, higher income
- 
Stable and Reliable
Meet the IEC61215 enhanced environment test and low attenuation characteristics
- 
Easy to install
A variety of installation methods, bonding and fixation, removable pressure block fixation
- 
safe and secure
Anti-ash accumulation design, light quality and safety, higher income, convenient operation and maintenance

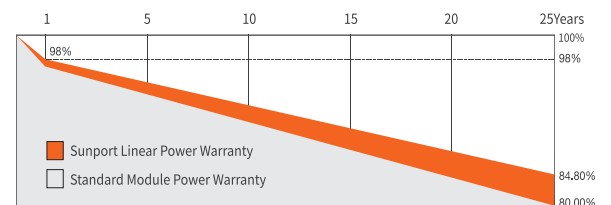
• Quality System

ISO9001
ISO14001
ISO45001

• Product Certificate

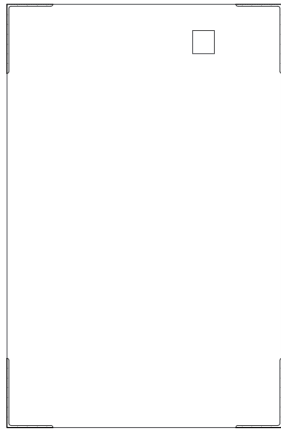
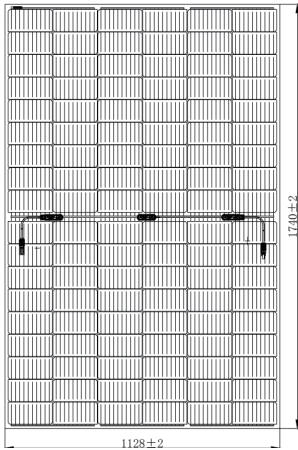


• Product Guarantee

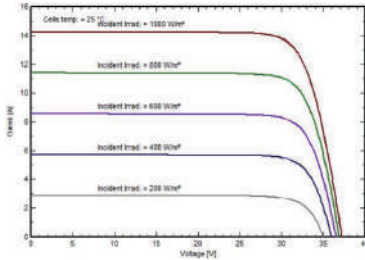


Tel / +86 131 3771 8313, +86 188 3741 8885
E-Mail / info@ericcity.com
Web / www.ericcity.com

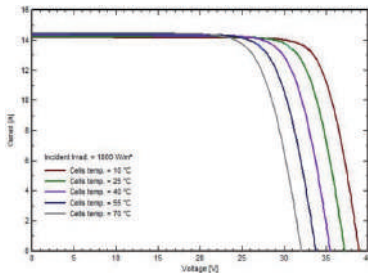
©2023 Ericcity. All rights reserved. Specifications subject to technical changes. Version number.2023/7



Curves of SSD410AH5T at different irradiance



Curves of SSD410AH5T at different cell temperature



Electrical Performance Parameters

Specification	ERIC420C
	STC
Nominal Power (P_{no})	420W
Voc (V_{oc})	37.60V
Isc (I_{sc})	14.22A
Vmp (V_{mp})	31.66V
Imp (I_{mp})	13.29A
Efficiency (η_p)	22.4%
Tolerance	0 ~ +5W
Maximum system voltage	DC1500V(IEC)
Maximum rated fuse current	25A

STC:AM=1.5, Irradiation:1000W/m², Temperature:25°C
 NMOT: Irradiation:800W/m², Temperature:20°C, Air Speed:1m/s

Structural Properties

Dimension	1740mm×1128mm×2.8mm
Weight	10.3kg
Glass specification	High permeability tempered glass
Solar panel cell	108(6x18) / Mono / 182*91mm
Encapsulation material	EVA
Frame	PPO Edge protection
Junction box	IP68, Customizable / 4mm ² , MC4 compatible
Waterproof	IP65
Output conductor	4.0mm ² (IEC) Length:90cm MC4
Mechanical load	3600Pa/2400Pa

Temperature Property

Nominal Module Operating Temperature	43±2°C
Temperature coefficient of Pmax	-0.35%/°C
Temperature coefficient of Voc	-0.26%/°C
Temperature coefficient of Isc	0.048%/°C
Operating temperature range	-40°C ~ +85°C

Packing

Container Size		Quantity(pcs)	Quantity(per pallet)
40HQ	Vertical Packing	1056	44

